

# MONTHLY MEMBERSHIP PROGRESS REPORT

District 325 I

Results as of: 8/31/2024

GMT:

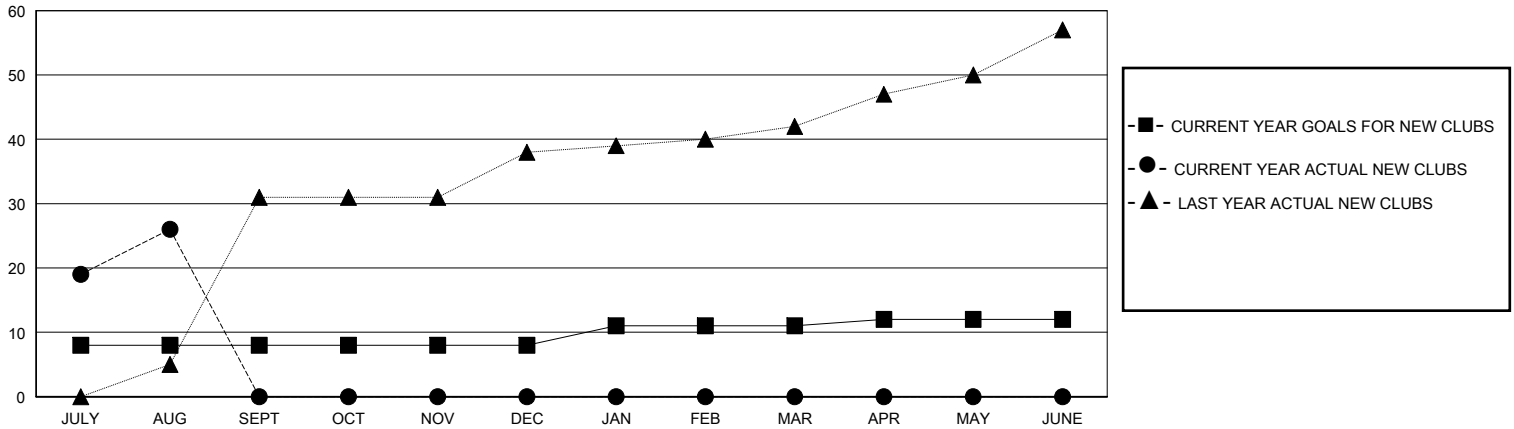
LOCATION NEPAL

GMT CA

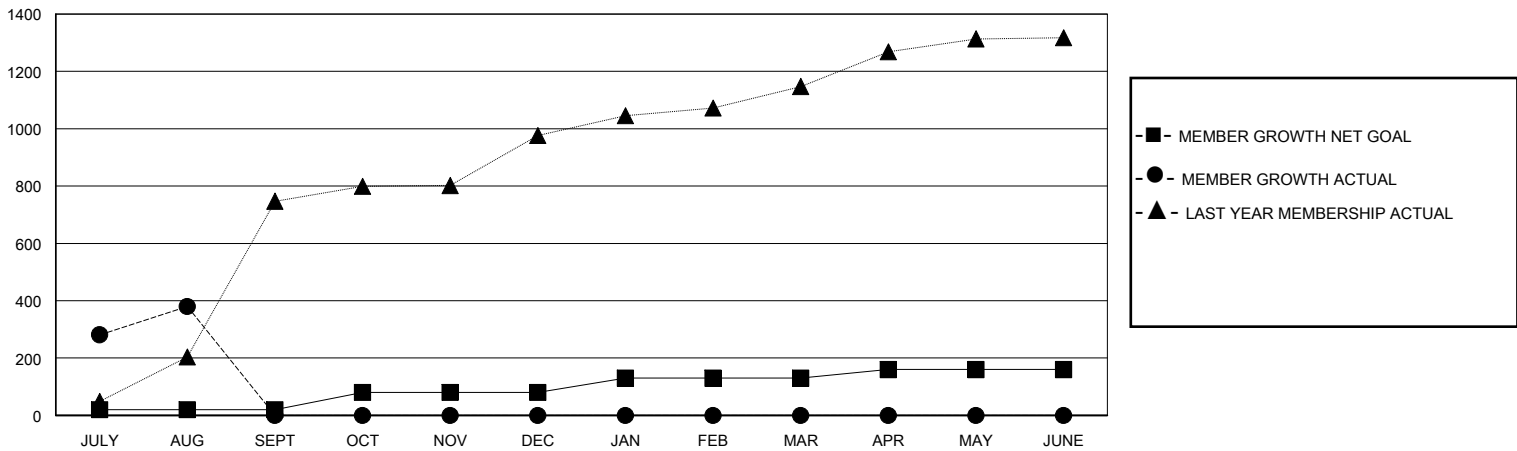
Clubs			
RESULTS FOR 2024-2025			
QUARTER	NEW CLUB GOAL	NEW CLUBS	DROPPED CLUBS
JULY/AUG/SEPT	8	26	1
OCT/NOV/DEC	0	0	0
JAN/FEB/MAR	3	0	0
APR/MAY/JUNE	1	0	0

Members			
RESULTS FOR 2024-2025			
QUARTER	MEMBER GROWTH NET GOAL	MEMBER GROWTH ACTUAL	DROPPED MEMBERS ACTUAL (including transfers)
JULY/AUG/SEPT	20	646	243
OCT/NOV/DEC	60	0	0
JAN/FEB/MAR	50	0	0
APR/MAY/JUNE	30	0	0

GOALS AND ACTUAL NEW CLUBS CUMULATIVE



GOALS AND ACTUAL MEMBERS CUMULATIVE



DROPPED CLUBS: 1

61 CLUBS OF 219 ADDED 1 OR MORE NEW MEMBERS

GENDER DISTRIBUTION

MALE 3,068 (65.35%)  
FEMALE 1,625 (34.61%)

DROPPED MEMBERS

DECEASED	0
CLUB CANCELLED	18
OTHER	224
<b>TOTAL</b>	<b>242</b>

[CLICK HERE FOR CUMULATIVE MEMBERSHIP DATA](#)

TOTAL FAMILY UNIT MEMBERS	4,326
FAMILY MEMBERS PAYING HALF DUES	3,161